

www.knights.uk.com

CARDIFF

VALE

CAERPHILLY

BRISTOL





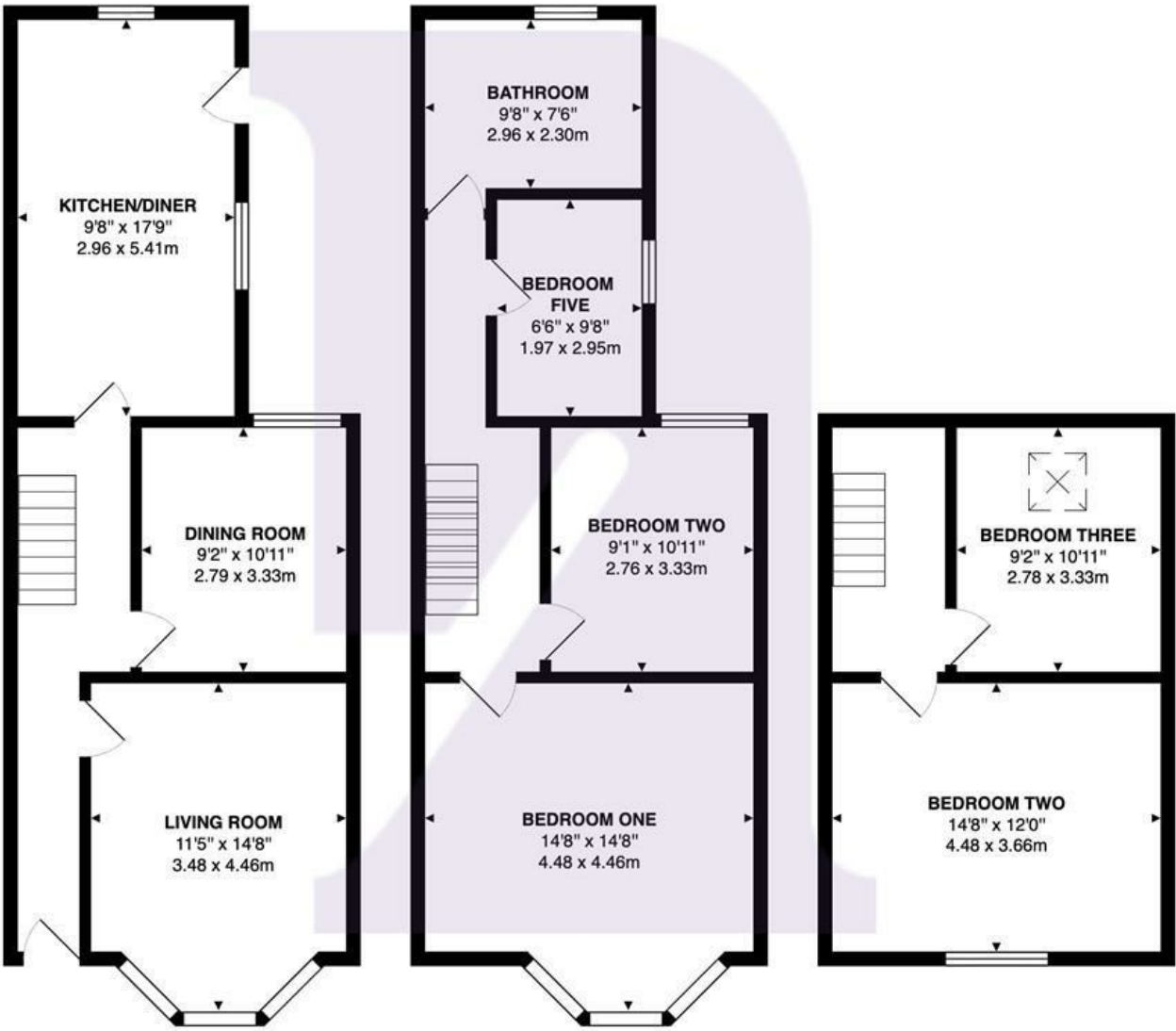
An impressive three-storey property offering generous living space throughout. With multiple reception areas, well-proportioned bedrooms, and versatile accommodation across all floors, this home is perfect for families or anyone seeking room to grow.

Comments by Mrs Samantha Draisey



Property Specialist
Mrs Samantha Draisey
Branch manager
samantha@knights.uk.com

Courtenay Road, Barry, CF63 3QG



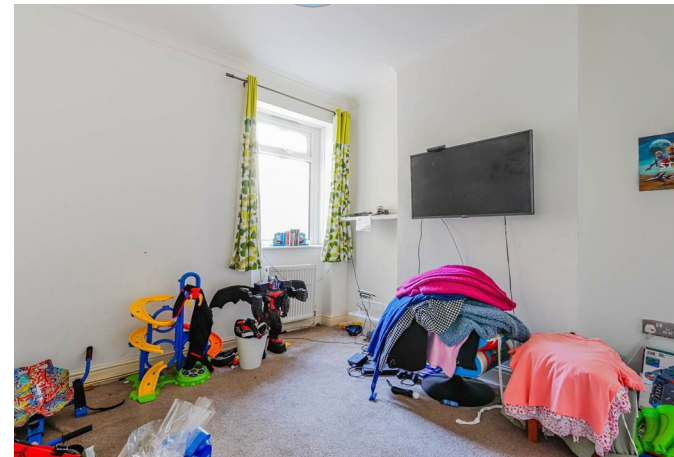
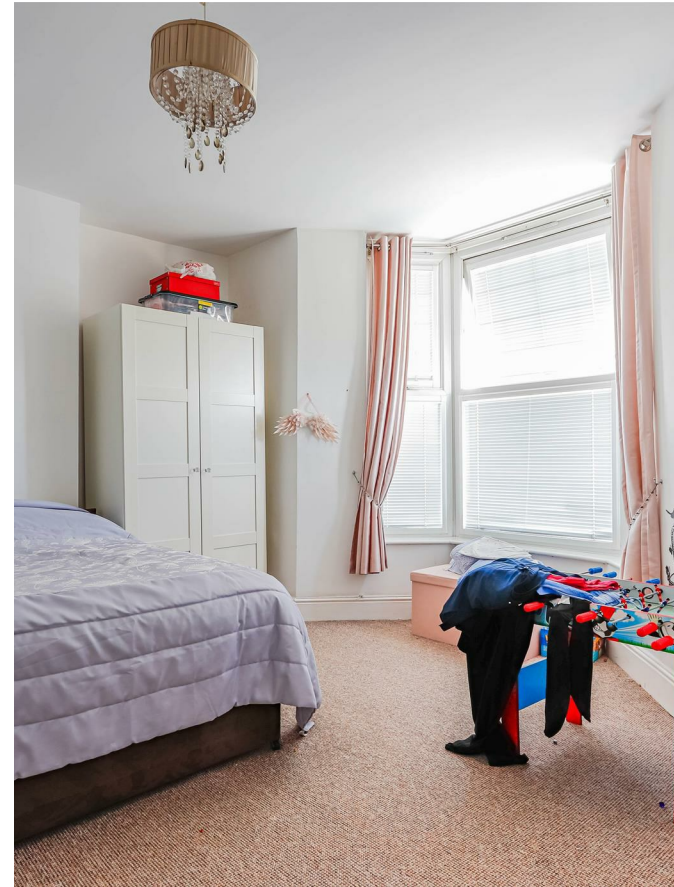
Total Area: 1420 ft² ... 132.0 m²

All measurements are approximate and for display purposes only

I've loved living here, but the house is now too big for me to manage. I hope the next owners will enjoy the space, garden, and location as much as I have.

Comments by the Homeowner





Courtenay Road

East End, Barry, CF63 3QG

Guide Price

£250,000



5 Bedroom(s)



1 Bathroom(s)



1571.53 sq ft



Contact our
Knights Barry Branch

01446 700222

Located on the sought-after Courtenay Road, this generous five-bedroom terraced house offers 1,572 sq ft of versatile living space, ideal for families or those needing room to grow.

The property features two bright reception rooms, a well-proportioned bathroom, and five spacious bedrooms, perfect for family life, home working, or guest accommodation. While some modernisation is needed, the home presents an excellent opportunity to personalise and add value.

Situated close to local amenities, schools, and transport links, this home combines space, potential, and a desirable location. Early viewing is highly recommended.



RECEPTION ROOM ONE 14'8 x 11'5 (4.47m x 3.48m)

RECEPTION ROOM TWO 10'11 x 9'2 (3.33m x 2.79m)

KITCHEN/DINER 17'9 x 9'8 (5.41m x 2.95m)

BEDROOM ONE 14'10 x 14'7 (4.52m x 4.45m)

BEDROOM TWO 14'9 x 12'6 (4.50m x 3.81m)

BEDROOM THREE 10'7 x 10'1 (3.23m x 3.07m)

BEDROOM FOUR 11'0 x 9'1 (3.35m x 2.77m)

BEDROOM FIVE 9'7 x 6'9 (2.92m x 2.06m)

BATHROOM 9'8 x 8 (2.95m x 2.44m)

CARDIFF

VALE

CAERPHILLY

BRISTOL



